

revive

we build society.

revive

We build society
since 2009

Founded by Nicolas Bearelle and Piet Colruyt in 2009, Revive is an urban brownfield real estate developer and investor focused on affordable, sustainable and future-proof residential projects in Belgium & Europe.



What

1) Urban regeneration & brownfield development

- Strong track record in added value projects based on sustainable neighbourhood principles and bottom-up development creating a buyer advantage
- **> Public and corporate brownfield sites**

2) Affordable & multi-purpose housing

- Large-scale, multi-purpose development schemes based on lean manufacturing and prototype building supported by shared services and amenities
- **> A unique proposition for local stakeholders**

3) Carbon-free and serviced communities

- by technology and automated services building strong communities within an urban realm
- **> Data driven optimization**

How

OPPORTUNITIES & DISTRESSED SALES

PROFESSIONAL CLIENTS

Hoechst



Henkel

AGFA



Tupperware



COMPLEX TRANSACTIONS

- Liability transfer
- Drive value

OUR ADDED VALUE

revive
we build society.

- Repurpose/ rezone
- Demolish/ remediate
- Masterplan/ optimize
- Placemaking/ branding

SUSTAINABLE NEIGHBOURHOODS

MIXED USE



FUTURE PROOF

- Carbon free
- Community driven
- Tech enhanced



OUR MANIFESTO

01 We offer people a better quality of life

At Revive, we pride ourselves on making better and happier places to live for everyone. Space to enjoy nature and social interaction is a key aspect of this.

02 We have an eye for esthetics and personality

Commitment to ecology doesn't have to stand in the way of esthetics. By giving a new lease of life to abandoned sites with a rich past, we create neighborhoods that exude character and passion.

03 We swear by maximum mobility

We don't ban cars, but we do reinterpret their role. Our vision of mobility translates into low-traffic neighborhoods.

04 We actively build a sustainable future

First and foremost, we devote ourselves only to sustainable urban development. Plus, from the outset we swap CO2 as much as possible for renewable energy and smart technology.

05 We care about how people live

Revive sites combine culture, living and leisure more than any other. And we also take into account entrepreneurship. Local trade, workplaces and manufacture often play a crucial role here.

VIBRANT NEIGHBORHOODS



revive



saffrou
L'AMBIENT D'UN SAFFROU
100% naturel
WATER IS LIFE
WATER IS LIFE
saffrou
LA SAFFROU
BRILLON L'AMBIENT

FRAKKIE

OPTIMAL WATER
MANAGEMENT



BIODIVERSITY & INFRASTRUCTURE



CLIMATE-NEUTRAL NEIGHBORHOODS

B Corporation



THE B CORP DECLARATION OF INTERDEPENDENCE

WE ENVISION A GLOBAL ECONOMY THAT USES BUSINESS AS A FORCE FOR GOOD. THIS ECONOMY IS COMPRISED OF A NEW TYPE OF CORPORATION – THE B CORPORATION – WHICH IS PURPOSE-DRIVEN AND CREATES BENEFIT FOR ALL STAKEHOLDERS, NOT JUST SHAREHOLDERS. AS B CORPORATIONS AND LEADERS OF THIS EMERGING ECONOMY, WE BELIEVE: THAT WE MUST BE THE CHANGE WE SEEK IN THE WORLD. THAT ALL BUSINESS OUGHT TO BE CONDUCTED AS IF PEOPLE AND PLACE MATTERED. THAT, THROUGH THEIR PRODUCTS, PRACTICES, AND PROFITS, BUSINESSES SHOULD ASPIRE TO DO NO HARM AND BENEFIT ALL. TO DO SO REQUIRES THAT WE ACT WITH THE UNDERSTANDING THAT WE ARE EACH DEPENDENT UPON ANOTHER AND THUS RESPONSIBLE FOR EACH OTHER AND FUTURE GENERATIONS.



Our promises
to our customers

Eco-friendliness

Convenience

Health

Inclusivity

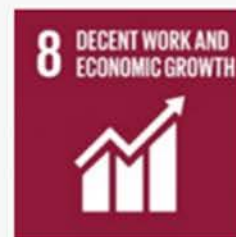
Openness



Our company purpose

we build
society

Our corporate performance
related to the SDGs





revive showcases



Showcase

Watt, Ghent

Before:

Elektrion motor oil
plant of 1.1 ha in
Ghent city



Showcase – Watt, Ghent

14
single-family houses

56
apartments

2
commercial spaces

Shared **neighborhood barn**

2,500 m² serviced offices

Rizoom restaurant

Completely delivered in 2020







Showcase

Komet, Mechelen

Before:

Abandoned Comet beer
barrel factory of approx.
4 ha



Showcase – Komet, Mechelen

40,500m²
GLA

314
apartments, assisted living and
single-family houses

1,600m² services and offices

Park of approx. 1 ha

Sustainable residential area
with **smart grid** and **ESCO**

1st phase under construction and on sale,
2nd phase on sale





ESCO at Komet



Showcase

Minerve, Edegem

Before:

Former Agfa-Gevaert
production plant of 6 ha.



Showcase – Minerve, Edegem

40,000m²
GLA

350
single-family house, apartments,
assisted living and social housing

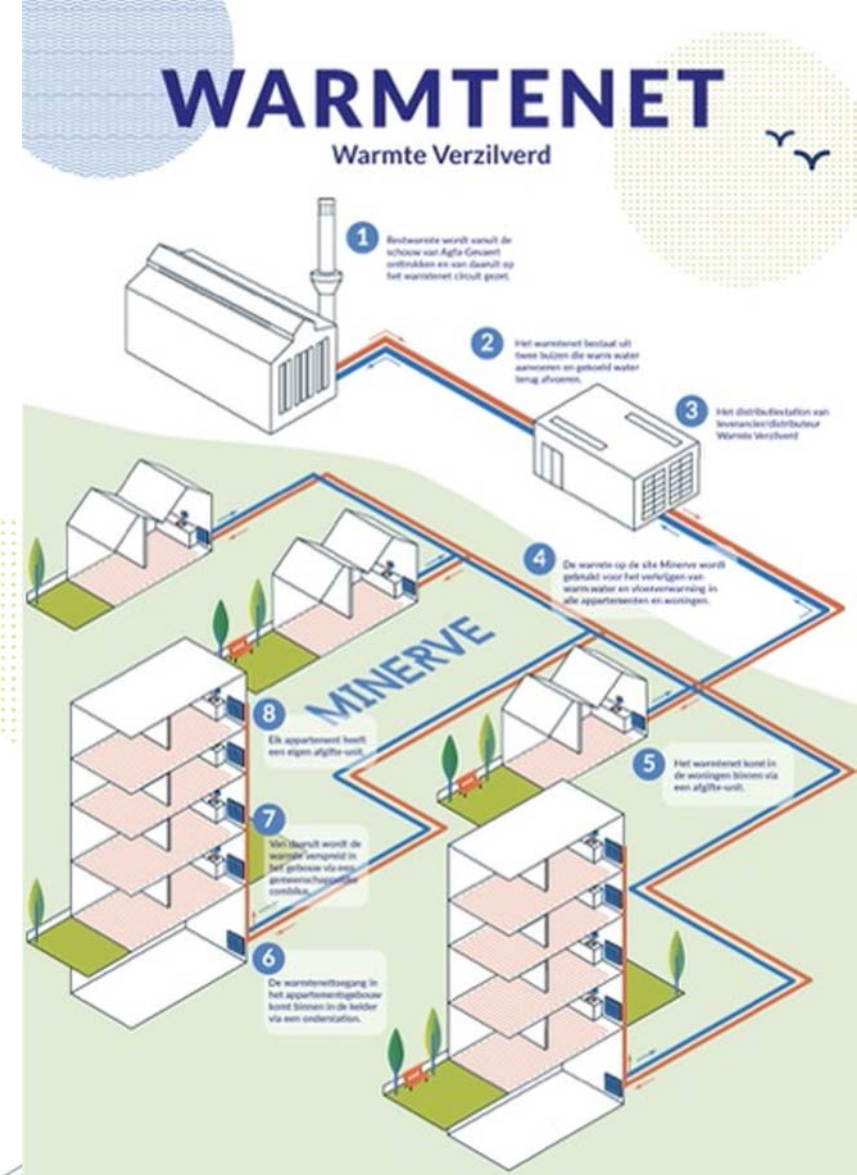
Sustainable water recovery

**1st phase under construction and on sale,
2nd phase on sale**





ESCO and WASCO at Minerve



Examples nature-inclusive building



Nest boxes for birds and baths integrated in buildings

The urban biotopes chosen for Vertical



Reference: Maïke Van Stiphout: Nature inclusive building guide

Examples bio-inclusive building



Careful selection of plants for birds, butterflies, bees, and other animals on the ground and on buildings

Examples materials



Re-use on site of cleaned brick from old warehouses

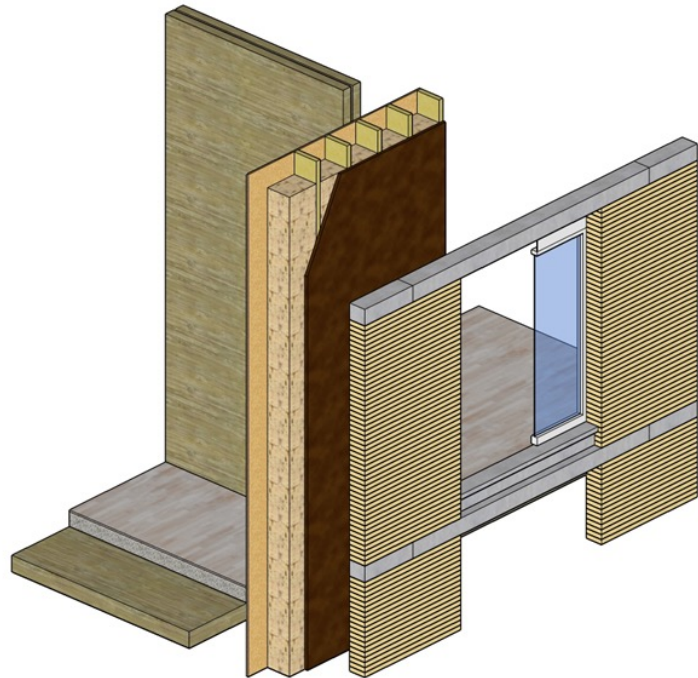


All wood in public domain is recycled wood: mock up and quality check by municipality

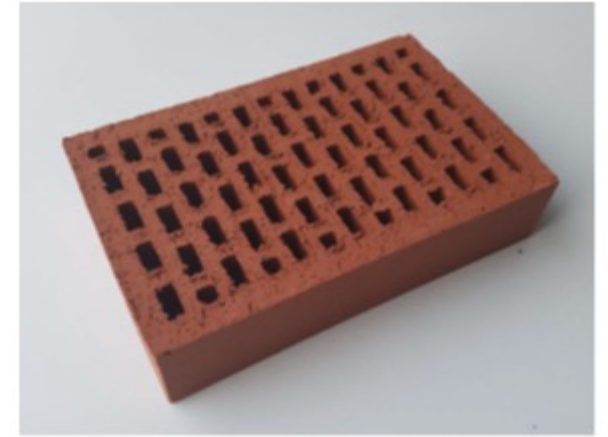
Examples materials

TANNAT Sint-Jans-Molenbeek
Project Revive

Construction with massive wood
Bio based insulation
Brick façade: separate with minimal connection



Façade
BLAF “Big Brick”



Kalkhennepisolatie
Isolation Chanvre



CLT Houtstructuur
Structure en bois
lamellé-croisé



Examples materials

TANNAT Sint-Jans-Molenbeek
Project Revive

Insulation lime hemp:
1/ planted on site
2/ used as insulating material



Drivers of change

Het familiebudget (finally) (vs “big oil”)

New business cases

bottlenecks

wetgeving

monopolies

Luiheid / cynisme ?